

Curve Tracer CS-3000 Series

Suitable for various semiconductor specification measurement such as IGBTs, MOSFETs, transistors and diodes, etc.

- Maximum peak voltage at 3000 V
- Maximum peak current at 1000 A (High-current mode including CS-3200 and CS-3300)
 - CS-3200 (Maximum at 400A)
 - CS-3300 (Maximum at 1000A)
- Equipped all models with LEAKAGE mode (Cursor resolution 1pA)
- USB port for display hardcopy, waveform data (CSV format) and measurement setup SAVE/RECALL
- LAN interface for Remote Control

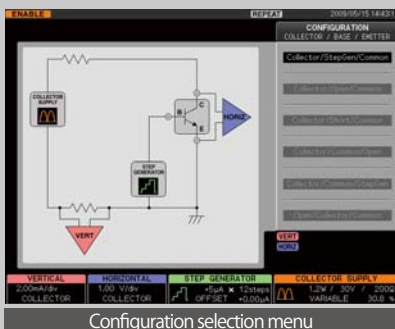


Curve Tracer **CS-3100**

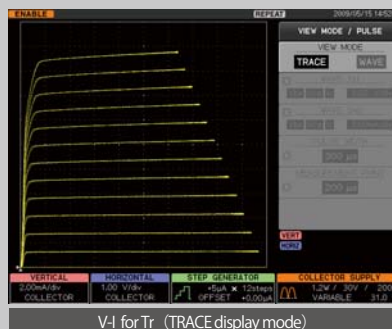


Curve Tracer **CS-3200/ CS-3300**

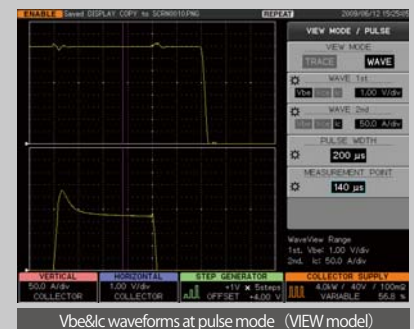
Easy to use display layout for all models



Configuration selection menu



V-I for Tr (TRACE display mode)



Vbe&Ic waveforms at pulse mode (VIEW model)

Specifications	CS-3100	CS-3200	CS-3300
Collector supply			
Corrector supply Mode	High voltage	High voltage mode: AC, +/- Full wave rectifying, +/- DC, +/- LEAKAGE	
	High current	—	High current mode: Pulse
Maximum peak power consumption selection	120mW, 1.2W, 12W, 120W, 390W note)390W can be selected excluding max. peak voltage at 3,000V range		
	—	High current mode(400W,4kW)	High current mode(400W,4kW,10kW)
High voltage mode	Maximum peak current(Maximum peak pulse current)		Maximum peak voltage
	75mA (150mA)		3,000V (2,500V at AC)
	750mA (1.5A)		300V
	7.5A (15A)		30V
Looping compensation	Stray capacitance compensation between Collector and GND by hardware at high voltage mode. Software compensation is also available.		
High current mode (only for pulse)	—	Max. peak current	Max. peak voltage
		400A	40V
		40A	40V
		1,000A	40V
Pulse width / measurement points	—	Pulse width is variable from 50 μ s to 400 μ s at 10 μ s resolution, Measurement point can be set.	
		—	
Maximum data points	20 to 1000 points can be set per each traces.		
Step generator			
Current mode	Amplitude range: 50nA to 200mA at 1-2-5 step Maximum curret: 10times of STEP AMPLITUDE setting, Offset: +/- 10times of STEP AMPLITUDE setting		
Voltage mode	Amplitude range: 50mA to 2V at 1-2-5 step Maximum curret: 10times of STEP AMPLITUDE setting, Offset: +/- 10times of STEP AMPLITUDE setting		
Step rate	Staircase waveform: 2times of 50Hz or 60Hz (50Hz or 60Hz at AC mode)	Staircase waveform: 2times of 50Hz or 60Hz (50Hz or 60Hz at AC mode) Pulse: variable from 80ms to 1000ms (Lowest frequency limited by maximum peak power consumption setting)	
Pulse steps	Pules width variable from 50 μ s to 400 μ s at 10 μ s resolution, measurement point can be set.		
Number of steps	0 to 20steps		
AUX output			
Range	OFF, variable from -40V to +40V at 100mV step		
Vertical axis			
Collector current	High voltage mode: 1 μ A/div to 2A/div (20steps) at 1-2-5 step		
	—	High current mode: 100mA/div to 50A/div (9steps) at 1-2-5 step	High current mode: 100mA/div to 100A/div (10steps) at 1-2-5 step
Emitter current (at LEAKAGE)	1nA/div to 2mA/div (20steps) at 1-2-5 step		
Horizontal axis			
Collector voltage	High voltage mode: 50mV/div to 500V/div, (13steps) at 1-2-5 step		
	—	High current mode: 50mV/div to 5V/div (7steps) at 1-2-5 step	
Base / Emitter voltage	50mV/div to 5V/div (7steps) at 1-2-5 step		
General specifications			
Display	8.4 inch color TFT-LCD (SVGA 800x600pixcells)		
Date save / Recall	Internal memory: 256 setups and 4 REF waveforms		
	External: USB port for setups, waveform save&recall, hardcopy of display into removable memory		
USB port	1port (USB1.1)		
Remote control	Remote control with LAN: 1port (100BASE-TX)		
AC power supply/ Power consumption	AC90V-AC264V single phase, 45Hz to 66Hz, 500VA		
Accessories	CS-301*1(Fixture S), CS-500*1(blank adaptor), Operation manual*1, Power cable*1	CS-302*1(Fixture M), CS-500*1(blank adaptor), Operation manual*1, Wire set*1, Power cable*1	
Dimensions, weight and environment condition			
Dimensions (mm)	Approx. 424W \times 555.2L \times 221H(mm)	Approx. 424W \times 555.2L \times 354.5H(mm)	
Weight	Approx. 30kg without accessories	Approx. 45kg without accessories	
Enviromental conditions	Operation: 0deg. to +40deg		Accuracy guaranteed: +10deg. to +35deg.

IWATSU <http://www.iti.iwatsu.co.jp/>

IWATSU ELECTRIC CO., LTD.

International Dept.
7-41, Kugayama 1-Chome, Suginami-ku,
Tokyo, 168-8501 Japan
Tel: +81-3-5370-5483
Fax: +81-3-5370-5230

Manufactured by IWATSU TEST INSTRUMENTS CORP.